

CERTIFICATE OF LOCATION OF GOVERNMENT CORNER

EAST QUARTER Corner of Section 12, Township 106, Range 40, 5TH P.M.

STATE OF MINNESOTA, County of MURRAY

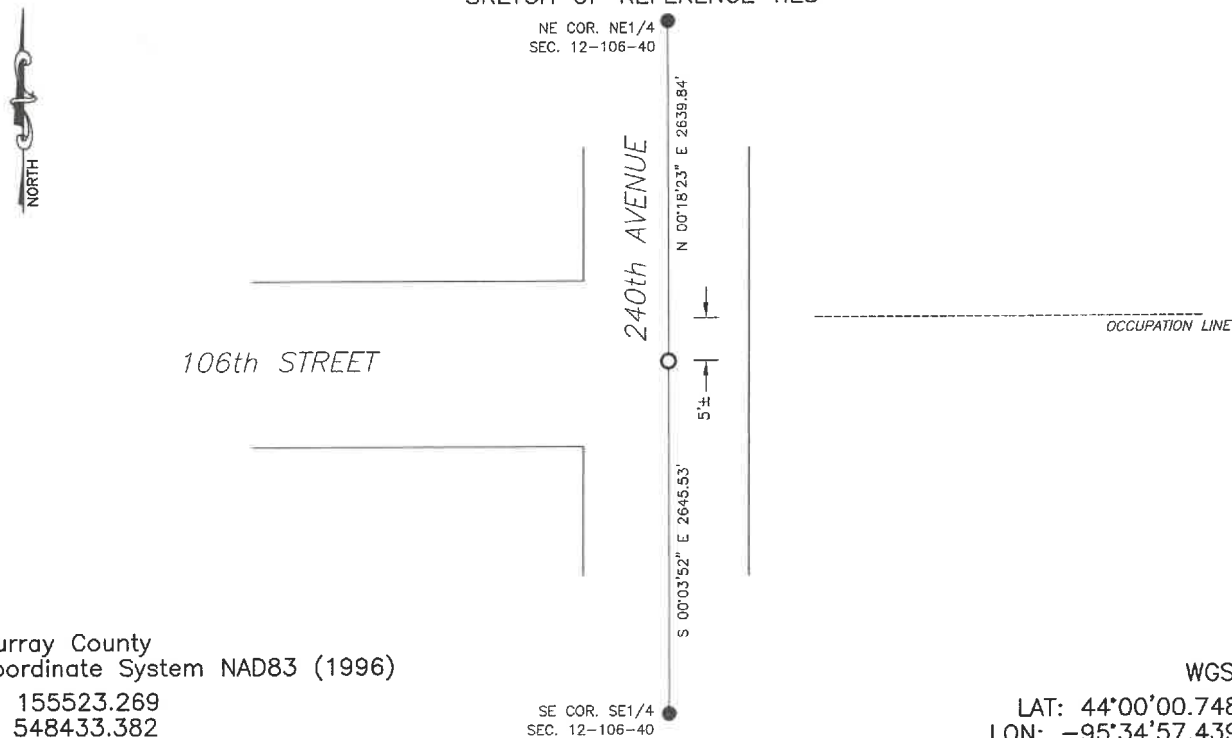
At the corner location shown on the sketch:

☒ On 7/24/2024 found a LARGE POINTED FIELD STONE.
DATE

☒ left monument as found, ☐ lowered monument, ☐ removed monument (explain)

☒ On 1/30/2025 placed a 5/8" IRON WITH SEAL #43844 OVER TOP OF THE STONE.
DATE

SKETCH OF REFERENCE TIES



Statement of evidence relative to this corner location is on back of page.

I hereby certify that this document and the data contained herein was prepared by me or under my direct supervision.

Daniel L. Bueltel
License No. 43844

3/12/2025
DATE

MAR 13 2025

MURRAY COUNTY RECORDER

Statement of Evidence

EAST QUARTER CORNER SECTION 12, T106N, R40W OF THE 5th P.M.

In 1861 J.W. Myers did the original survey of the township lines.

A survey dated April, 1977 notes a field stone located 3" below grade.

County records dated March 31, 2005 shows Zieske Land Surveying placed a gin spike at the corner.

County records dated May 25, 2012 shows a capped iron pin located at the corners.

On June 28, 2024 Bueltel-Moseng Land Surveying found a capped iron pin.

Returned on July 24, 2024 and dug with a backhoe and found a large pointed field stone.

Returned on January 30, 2025 and set a $\frac{5}{8}$ " iron with seal #43844 over top of the stone.